

# 2010 Fruit Tree Catalogue



94 Grove Road, Glenorchy, 7010  
Email: [sales@stonemans.com.au](mailto:sales@stonemans.com.au)

Ph: (03) 6273 0611  
Fax: (03) 6272 3569

Website: [www.stonemans.com.au](http://www.stonemans.com.au)



# FOREWORD



WRITTEN BY: LESLEY KIRBY

***Even if I knew that tomorrow the world would go to pieces, I would still plant my apple tree.***  
-- Martin Luther

Just as a body needs a skeleton, so a garden needs “good bones” if it is to function well – and the skeleton of a garden comes from its trees!

Trees can change the climate, provide shelter, filter dust, reduce noise, and provide micro climates - many provide us with beautiful blossom or stunning autumn colour, attract wildlife, and provide us a perfect backdrop for other plants. Garden trees make the ‘backbone’ of the garden.

Whether you're on a suburban block or country acreage you'll find a tree ideal for your garden. In Tasmania we're fortunate to be able to grow such a wide selection of trees from evergreens, both native and exotic, through to deciduous varieties as well as fruits, nuts and ornamentals. For many of us, trees have an important role in our childhood memories. Remember the first time you climbed a tree, or maybe your first rudimentary efforts at constructing a tree house? Growing up one of my most vivid memories of childhood summers is sitting high in the branches of our backyard mulberry tree, face and fingers stained red with mulberry juice, searching for silkworm eggs to be nurtured to maturity in a shoebox in my bedroom!

Trees are a critical element of our urban landscapes – not only do they add beauty, they help our cities breathe. In these times when we are all becoming more conscious of the need to care for our planet and live life with a small footprint, the role trees play in ensuring a healthy environment is self evident. Want to reduce your carbon footprint? Easy, plant some trees!

As the 19<sup>th</sup> century poet Lucy Larcom said, *“He who plants a tree, plants a hope”*

Lesley Kirby  
Director  
Royal Tasmanian Botanical Gardens





<b>MINIATURE FRUIT TREES</b>		<i>All prices include GST</i>	<b>PRICE</b>
<b>APPLES</b>			
TRIXZIE <sup>®</sup> GALA	Bright red striped fruit. Excellent flavour, good keeper. Grafted onto Trixzie miniature root stock. 1.5m X 1.5m		\$55.95
TRIXZIE <sup>®</sup> PINK LADY	Bright pinkish-red skin colour. Crisp & juicy. Precocious, regular bearer. Late season maturity. Grafted onto Trixzie miniature root stock, ideal for small gardens. Full sized fruit. 1.5m X 1.5m		\$55.95
TRIXZIE <sup>®</sup> CHEREE	<b>I'm back!</b> Self pollinating, black heart cherry grafted onto Trixzie miniature root stock. 1.5m X 1.5m		\$55.95
<b>NECTAZEE</b>	Dwarf nectarine. Heavy bearer of yellow fleshed fruit. 1.5m X 1.5m		\$55.95
<b>PIXZEE</b>	Dwarf peach. Prolific bearer. White fleshed normal size peaches.		\$55.95
<b>TRIXZIE<sup>®</sup> 2 WAY PEACH/NECTARINE</b>	Pixzee Peach & Nectazee Nectarine on the same tree.		\$68.95
<b>PEAR</b>			
TRIXZIE PIPSQUEAK	Juicy, well flavoured fruit. Full sized pears, self pollinating. 1.5m X 1.5m.		\$55.95



### MINIATURE FRUIT TREES

All prices include GST

**PRICE**

continued

### BALLERINA APPLES

*Columnar apple trees ideal for small gardens and containers. 4m height X 60cm width*

BOLERO	Medium sized fruit with bright red/green skin. Good eating & cooking. Slightly acidic taste. Pollination: Waltz, Polka, Granny Smith & Jonathan	\$55.95
WALTZ <b>I'm back!</b>	Return at last of the most popular of the Ballerina apples. Crisp eating apple, red skin, juicy flesh. Pollination: Bolero, Granny Smith & Jonathan	\$55.95
POLKA	Crisp, juicy green apples. Bears at young age. Advanced potted specimen. Pollination: Waltz, Bolero, Granny Smith, Red Delicious & Jonathan	<b>from</b> \$75.00

### APPLE POLLINATION CHART

Bramley	Granny smith, Golden Delicious
Cox's Orange Pippin:	Golden Delicious, Granny Smith, Jonathon, Red Delicious, Lady n the Snow.
Gala:	Granny Smith, Red Delicious, Red Fuji, Pink Lady.
Golden Delicious:	(Partially self fertile) Red Delicious, Granny Smith, Cox's Orange Pippin, Jonathon.
Granny Smith:	Golden Delicious, Gala, Jonathon, Cox's Orange Pippin.
Gravestain:	Golden Delicious, Sturmer, Crofton.
Jonagold:	Red Fuji, Red Delicious, Gala, Granny Smith.
Jonathon:	Mutsu, Granny Smith, Golden Delicious, Red Delicious.
Red Fuji (Striped):	Red Delicious, Golden Delicious, Mutsu, Pink Lady, Sturmer, Jonathon.
Pink Lady:	Granny Smith, Red Delicious, Gala, Red Fuji.
Lady in the Snow:	Cox's Orange Pippin, Golden Delicious, Granny Smith, Jonathon.
Red Delicious:	Golden Delicious, Granny Smith, Fuji, Pink Lady, Gala.

### APPLES ON DWARF ROOT STOCK

2.5m X 2.5m

COX'S ORANGE PIPPIN	Used for fresh fruit, drying and cooking, suits cooler climates, early to mid season maturity.	\$21.95
FUJI	Large red skinned fruit. Creamy, crisp juicy flesh. Sweet flavour.	\$21.95
GALA	Very sweet, perfumy fruit. Good keeper.	\$21.95
GOLDEN DELICIOUS	Used for fresh fruit, cooking and drying, keeps well, suitable for most climates, mid season maturity. Universal pollen donor.	\$21.95



## TRADITIONAL SIZE FRUIT TREES

All prices include GST

**PRICE**

Approx. 4 m X 4m

### ALMONDS

PAPER SHELL	Self pollinating soft shell variety. <b>Potted specimens only.</b> <i>Note: needs to be pruned when planting to reduce transplant shock.</i> <b>* Order now, ready in the spring.</b>	\$49.95
-------------	---	---------

### APPLES

BRAMLEY	World's most famous cooking apple. In cultivation for 200 years Bramley apples have over 500 growers worldwide & a dedicated website. Large green skinned apples tend to be too tart to eat raw but lend themselves beautifully to a myriad of savoury and dessert recipes. <i>The original seedling planted in 1809 is still living and producing fruit.</i>	\$21.95
COX'S ORANGE PIPPIN	Used for fresh fruit, drying and cooking, suits cooler climates, early to mid season maturity.	\$21.95
CROFTON	Mid season, crunchy red/green fruit	\$21.95
FUJI	Large red skinned fruit. Creamy, crisp juicy flesh. Sweet flavour.	\$21.95
GALA	Vigorous, bright red striped fruit. Excellent flavour, keeps well. Winner of numerous awards.	\$21.95
GOLDEN DELICIOUS	Used for fresh fruit, cooking and drying. Keeps well, suitable for most climates, mid season maturity. Universal pollen donor.	\$21.95
GRANNY SMITH	Used for fresh fruit, cooking and drying, keeps well, suited to most climates.	\$21.95
JONAGOLD	Cross between Jonathon & Golden Delicious. Excellent crisp flavour.	\$21.95
JONATHON	Fresh fruit, cooking and drying, popular for the home orchard, very useful as a pollinizer, mid season maturity.	\$21.95
PINK LADY	Popular newer variety. Crisp juicy flesh, good flavour.	\$21.95



## TRADITIONAL SIZE FRUIT TREES

*All prices include GST*

**PRICE**

### APPLES *continued*

POMME DE NEIGE (Lady in the Snow)	Small crisp apple with brilliant white flesh, stores well. Use for fresh fruit, cooking and drying. Mid season maturity.	\$21.95
RED DELICIOUS	Fresh fruit, cooking and drying, flavour improves with storage, mid season maturity.	\$21.95
STURMER PIPPIN	Yellow, acid flavour fruit. Good cropper. Ripens in May – pick early for storage.	\$21.95

### HERITAGE APPLES

GEEVESTON FANNY	Small, attractive, bright reddish purple apple with sweet white flesh. Heavy regular bearer. Bred in Tasmania 1870.	\$29.95
20 OUNCE	Premier cooking apple in the U.K. for over a century. Very large fruit with bright yellow flesh. Firm, tender, juicy fruit, tart flesh.	\$29.95
YARLINGTON MILL	Traditional Somerset producing medium to bitter-sweet cider. Flesh: White, soft & dry with slight astringency.	\$21.95

### APRICOTS

MOORPARK	Excellent for fresh fruit, jam, drying, stewing and juice. Most popular home variety due to rich flavour, good for cooler areas.	\$21.95
TILTON	Fresh fruit, stewing, drying, juice, jam and preserving. Suitable for cooler areas, late season maturity.	\$21.95
TREVATT	Fresh fruit, preserving, drying, stewing, jam and glace. Excellent quality apricot, early season maturity.	\$21.95



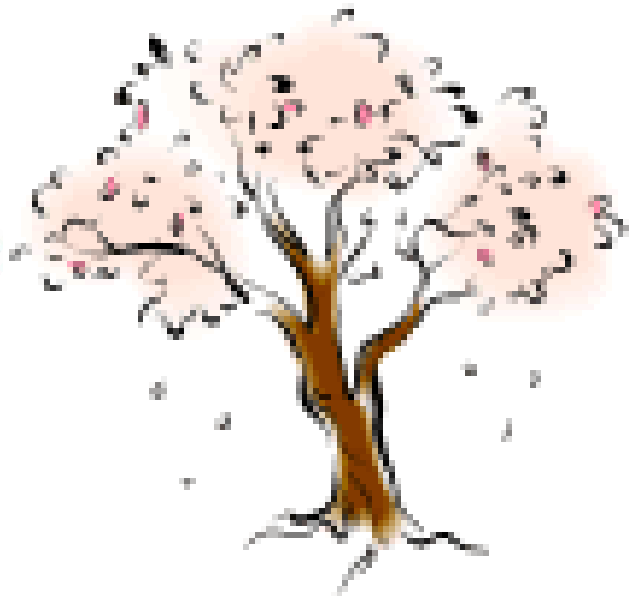
<b>CHERRIES</b>		<i>All prices include GST</i>	<b>PRICE</b>
COMPACT STELLA	As per Stella, but grafted onto dwarfing rootstock.		\$21.95
LAPIN	Self pollinating, dark flesh variety.		\$21.95
KENTISH	Sour cherry. Useful for cooking and liqueurs. Crimson to near black cherries. Self pollinating.		\$21.95
STELLA	Fresh fruit, jam and preserving, self pollinating cherry, large fruit with red flesh, sweet and juicy. Mid to late season maturity. Universal pollen donor.		\$21.95
SIMONE	Dark fleshed, self pollinating variety. Mid – late season.		\$21.95
SUNBURST	Cross between Stella & Van. Another self fertile variety, has large black cherries with sweet and gorgeous flavour that some people say is reminiscent of raspberries. Resistant to cracking and splitting.		\$21.95



### CHERRY POLLINATION CHART

Stella: Self Compatible, Universal Pollinator.

Lapins: Self Compatible, Universal Pollinator.



### NECTARINES

FANTASIA	Fresh fruit, drying and cooking, yellow flesh with large fruit, good flavour. Mid season maturity.	\$21.95
GOLDMINE	Fresh fruit, drying and cooking, white flesh, delicious flavour. Popular Tasmanian variety. Mid to late season maturity.	\$21.95



<b>PEACHES</b>	<i>All prices include GST</i>	<b>PRICE</b>
ANZAC	Use for fresh fruit and juice, freestone peach with light green flesh and good flavour. Early season maturity.	\$21.95
BRIGGS EARLY MAY	Soft, semi – freestone. Skin – white with red coloured blush. Late Dec / early January maturity.	\$21.95
GOLDEN QUEEN	Firm, flesh clingstone peach, used for eating, juice, preserving and bottling, major canning variety. Very late season maturity. (Mid March)	\$21.95
JULY ELBERTA	Yellow fleshed large fruit. Freestone. Heavy and reliable cropper. Late season maturity.	\$21.95
PEACHARINE	Fresh eating, drying and stewing, cross between peach and nectarine, good flavour, yellow flesh. Mid to late season maturity.	\$21.95
REDHAVEN	Fresh eating, drying and stewing, large freestone peach with yellow flesh and good flavour. Mid season maturity.	\$21.95
<b>PEARS</b>		
BEURRE BOSCH	Fresh fruit, drying, preserving and cooking. Heavy cropper, good keeping qualities and excellent flavour, mid season maturity.	\$21.95
CORELLA	Small to medium fruit with tinge of light red over green yellow. Creamy white flesh with firm medium texture and moderate juice.	\$33.95
PACKHAMS TRIUMPH	Large fruit of excellent flavour, good keeper. Use for fresh fruit, drying, preserving and cooking.	\$21.95
WILLIAMS (BARTLETT)	Fresh fruit, juice, stewing, preserving and drying, very juicy with sweet flavour, good under refrigeration, early season maturity.	\$21.95
WINTER COLE	Green skin turning pale yellow. White juicy flesh.	\$21.95
<b>NASHI PEARS</b>		
NIJISSEIKI (20 <sup>TH</sup> CENTURY)	Fresh fruit and juice, combined flavour and sweetness of a pear with crispness and shape of an apple, warm and cool climate, mid season maturity.	\$21.95
SHINSUI	Golden brown skin. Very sweet juicy flesh.	\$21.95



Beurre Bosc:  
Corella  
Packhams:  
Williams:  
Winter Cole:  
.Shin Sui:  
20<sup>th</sup> Century:

### PEAR POLLINATION CHART

Williams, 20<sup>th</sup> Century, Winter Nelis  
Packhams  
Josephine, Winter Nelis  
Beurre Bosc, 20<sup>th</sup> Century, Winter Nelis, Comice.  
Williams, Beurre Bosc.  
20<sup>th</sup> Century, Hosui, Cho Juro, Beurre Bosc.  
Hosui, Shin Sui, Williams, Kosui, Cho Juro, (partially self fertile).





<b>PRUNES</b>		<i>All prices include GST</i>	<b>PRICE</b>
D'ENTE 707	Fresh fruit, jam and stewing and excellent drying variety. One of the best prunes, mid to late season maturity.		\$21.95
<b>PLUMS (EUROPEAN)</b>			
COE'S GOLDEN DROP	Fresh fruit, drying and jam. Juicy and sweet flavour. Late season maturity.		\$21.95
COLES GOLDEN GAGE	Late season maturity. Yellow variety.		\$21.95
GREEN GAGE	Fresh fruit, jam, drying and cooking. Fine flavour, mid season maturity.		\$21.95
VICTORIA	Early to mid season. Good for cooking or eating. Blue skinned, yellow fleshed fruit. Self pollinating.		\$21.95
<b>PLUMS (JAPANESE)</b>			
LUISA	<b>New!</b> Self fertile, yellow fleshed plum. Very sweet and juicy.		\$36.95
MARIPOSA	Mid season. Blood plum.		\$21.95
PLUMCOT	Fresh fruit and jam, cross between an apricot and plum, similar in size to apricot. Mid season variety.		\$21.95
SANTA ROSA	Fresh fruit, jam and stewing, large top quality fruit, one of the best varieties, mid season maturity.		\$21.95
SATSUMA	Fresh fruit, stewing, excellent for jam and preserving. Rich, juicy, blood plum. Mid season maturity. Self fertile.		\$21.95
<b>PLUM POLLINATION CHART - EUROPEAN</b>		<b>JAPANESE PLUMS</b>	
Green Gage:	Coe's Golden Drop, Prune, Damson, Golden Gage.	Mariposa:	Santa Rosa, Satsuma.
Plumcot:	Apricot, Plum.	Santa Rosa:	Satsuma, Mariposa
Coe's Golden Drop:	Green Gage, Golden Gage, Prune, Damson.	Satsuma:	Santa Rosa.
Coe's Golden Gage:	Green Gage, Golden Gage, Prune, Damson.		



<b>2 WAY MULTI GRAFTS</b>		<i>All prices include GST</i>	<b>PRICE</b>
Descriptive information for the varieties listed below can be found elsewhere in this catalogue.			
<b>APPLE</b>	Red Delicious / Golden Delicious		
	Golden Delicious / Granny Smith		
	Golden Delicious / Cox's Orange Pippin		\$39.95
	Granny Smith / Pink Lady		
<b>APRICOT</b>	Trevatt / Moorpark		\$59.95
<b>CHERRY</b>	Royal Rainier White / Stella Black		\$59.95
<b>NECTARINE</b>	Goldmine / May Grand		\$59.95
<b>PEACH/NECTARINE</b>	Anzac (Peach) / Goldmine (Nectarine)		\$39.95
<b>PEAR/NASHI</b>	Williams / 20th Century		\$39.95
<b>PLUM</b>	Green Gage / Golden Drop (European)		\$39.95
	Santa Rosa/Satsuma (Japanese)		
<b>3 WAY MULTI GRAFTS</b>			
<b>APPLE</b>	Akane / Red Fuji / Golden Delicious		\$59.95
	Gala / Red Fuji / Pink Lady		\$59.95
<b>APRICOT</b>	Moorpark / Trevatt / Hunter		\$59.95
<b>NASHI</b>	Chojuro / Nijisseiki / Shinsui		\$59.95
<b>PEACH</b>	Redhaven /Tasty Zee / Double Jewel		\$69.95



MISCELLANEOUS	FRUITS	<i>All prices include GST</i>	PRICE
<b>KIWI FRUIT</b>			
HAYWOOD	Female Variety, used for fresh fruit, jam, wine and food presentation, good flavour and keeping quality, late season maturity. Requires cross pollination		\$25.95
	Male Pollinator		\$25.95
<b>MEDLAR DUTCH</b>	Attractive tree grown primarily for it's brown fruit that is edible after they are 'bled'. Very sweet, pulpy fruit.		\$25.95
<b>MULBERRIES</b>			
BLACK ENGLISH	Fresh fruit, jam, cooking and excellent for wines. Matures late spring.		\$59.95
WHITE MULBERRY	Fast growing small to medium sized tree. Leaves used to feed silkworms are up to 30cm long. Red berries are sweet but bland. It is interesting to note that this plant is noted for the rapid movement of pollen from it's catkins. Pollen is fired into the air at over half the speed of sound, the fastest known movement in the plant kingdom.		\$36.95
<b>POMEGRANATE</b>			
ELCHE	Double orange red flowers. Large pink skinned fruit. Old Spanish variety.		\$29.95



<b>MISCELLANEOUS FRUITS</b>		<i>All prices include GST</i>	<b>PRICE</b>
<i>continued</i>			
<b>QUINCE</b>			
SMYRNA	Large lemon coloured fruit, stores well, matures March. Quince jelly and quince cheese, both all time favourites, No apple tart is complete without a quince.		\$21.95
<b>CHESTNUT</b>			
APRIL GOLD	Early variety from the Dandenongs (Vic.). Extra large dark coloured nuts. Upright habit, free falling nuts, excellent for roasting and cooking.		\$45.95
EMERALD GREEN	Australian variety from Emerald Lake in the Dandenongs. Spreading, almost weeping, tree. Prolific heavy bearer. Orange/tan coloured nuts without stripes.		\$59.95
SEEDLINGS	Grown from nuts of trees selected for fruiting quality. Seedlings tend to produce quality fruit. Cross pollination preferable.		\$25.95
<b>WALNUTS</b>			
BLACK WALNUT	Seedling variety. As well as nuts, makes a prized specimen tree and valuable timber for craftsmen.		\$45.95
WILSON WONDER	Seedling variety, fruit set is improved by planting two trees.		\$45.95
<b>HAZELNUTS</b>			
WANLISS PRIDE (American White)	Prolific bearer of large sized nuts suitable for roasting, blanching, fresh purees and cooking.		\$25.95
COSFORD	Hardy, good bearer of medium sized nuts. Good pollinating variety.		\$25.95



<b>MISCELLANEOUS FRUITS</b> <i>continued</i>	<i>All prices include GST</i>	<b>PRICE</b>
<b>CURRENTS</b>		
RED		\$ 7.95
BLACK		\$ 7.95
<b>BERRIES</b>		
THORNLESS BLACKBERRY		\$ 9.95
BOYSENBERRY		\$ 9.95
GOOSEBERRY		\$ 9.95
YOUNGBERRY		\$12.95
LOGANBERRY		\$12.95

